

MANUAL-I

The particulars of its organization, functions and duties

Delhi Vidyut Board (DVB) was a State Electricity Board set up in 1997 under the Electricity (Supply) Act, 1948 succeeding the Delhi Electricity Supply Undertaking (DESU), which existed since 1967 as a wing of Municipal Corporation of Delhi. It was an integrated utility with generation, transmission and distribution functions, serving whole of Delhi except the NDMC and MES (cantonment) areas, to which it supplied power in bulk. Delhi Transco Limited came into existence on 1st July, 2002 as one of the corporate entities carved out of erstwhile Delhi Vidyut Board. Organizational chart is enclosed.

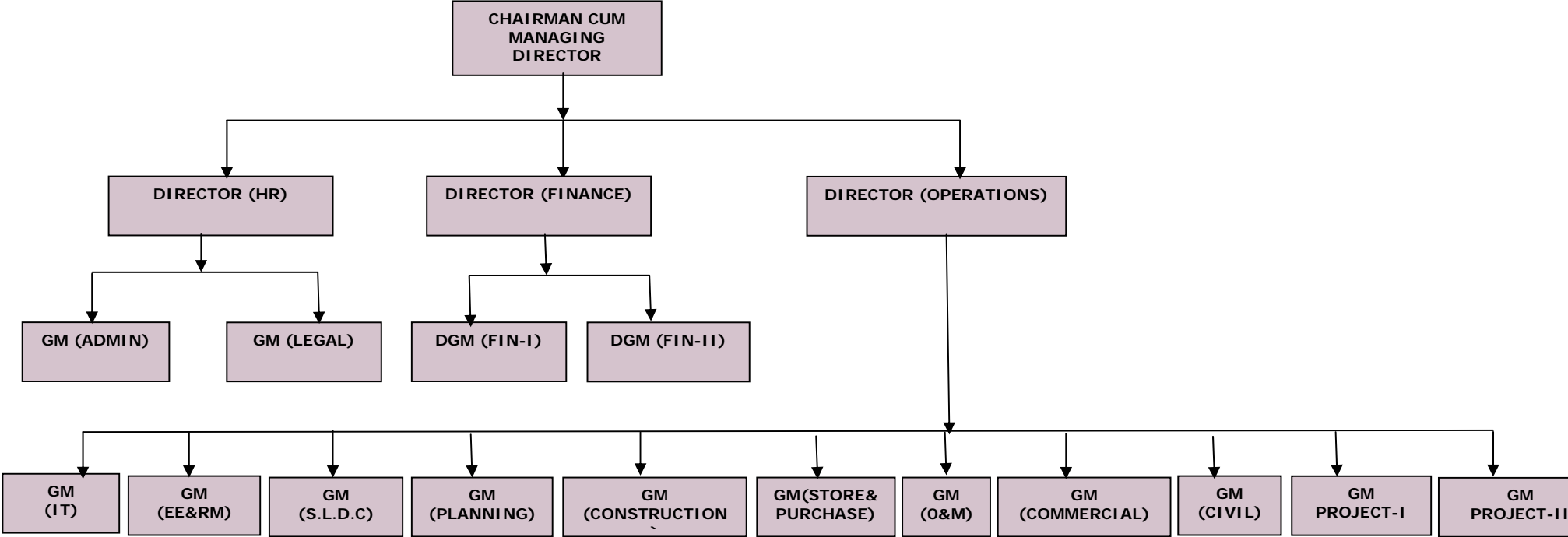
Over the years, Delhi Transco Limited has grown to keep pace with the increasing challenges as State Transmission utility for Delhi. Delhi Transco Limited is responsible for transmission of power at 220 KV and above voltage levels, besides establishment, up gradation, operational maintenance of EHV (Extra High Voltage) network.

NETWORK OF DTL

The network of Delhi Transco Limited comprises Sub Station & Transmission Lines of 220 KV and 400 KV. At present DTL has 2 sub stations of 400 KV and 22 sub stations of 220 KV voltage level.

In order to draw power from Northern Regional Grid, a 400 KV Double Circuit ring having capacity of 2000 MW per circuit has been established around Delhi, which connects Dadri Thermal Power Station of NTPC with Ballabhgarh, Bamnauli, Bawana and Mandola.

ORGANIZATION CHART OF DTL



DELHI TRANSCO LIMITED

[Office of Director (Operations)]

1. Background:

Delhi Transco has been declared as a State Transmission Utility under the Electricity Act 2003 and was carved out from the erstwhile Delhi Vidyut Board on 1st July, 2002. The functions of the State Transmission Utility are as follows:-

- To undertake transmission of electricity through intra-State transmission system;
- To discharge all functions of planning and co-ordination relating to intra-State transmission system with-
 - (i) Central Transmission Utility;
 - (ii) State Government;
 - (iii) Generating companies;
 - (iv) Regional Power Committees;
 - (v) Authority;
 - (vi) Licensees;
 - (vii) Any other person notified by the State Government in this behalf
- To ensure development of an efficient coordinated and economical system of intra-State transmission lines for smooth flow of electricity from a generating station to the load centers;
- To provide non-discriminatory open access to its transmission system for use by;
 - (i) Any licensee or generating company on payment of the transmission charges; or
 - (ii) Any consumer as and when such open access is provided by the State Commission under sub-section (2) of section 42, on payment of the transmission charges and a surcharge thereon, as may be specified by the State Commission.

The duties of the Transmission Companies are as follows:-

- To build, maintain and operate an efficient, coordinated and economical inter-State transmission system or intra-State transmission system, as the case may be;
- To comply with the directions of the Regional Load Despatch Centre and the State Load Despatch Centre as the case may be;
- To provide non-discriminatory open access to its transmission system for use by____
 - (i) any licensee or generating company on payment of the transmission charges; or
 - (ii) any consumer as and when such open access is provided by the State Commission under sub-section (2) of section 42, on payment of the transmission charges and a surcharge thereon, as may be specified by the State Commission.

2. State Load Despatch Centre (SLDC):

- State Load Despatch Centre is to be established in the State and shall be the apex body to ensure integrated operation of the power system in the State.
- State Load Despatch Centre shall be responsible for optimum scheduling and dispatch of electricity within a State, in accordance with the contracts entered into with the licensees or the generating companies operating in that State;
- Monitor grid operations;
- Keep accounts of the quantity of electricity transmitted through the State grid,
- Exercise supervision and control over the intra-State transmission system; and be responsible for carrying out real time operations for grid control and dispatch of electricity within the State through secure and economic operations of the State grid in accordance with the Grid Standards and the State Grid Code.

Compliance of directions:

- The State Load dispatch Centre in a State may give such directions and exercise such supervision and control as may be required for ensuring the integrated grid operations and for achieving the maximum economic and efficiency in the operation of power system in that State.
- Every licensee, generating company, generating station, sub-station and any other person connected with the operation of the power system shall comply with the directions issued by the State Load Despatch Centre.

3. Operation & Maintenance Wing:

- Operation and Maintenance Wing is responsible for operation and maintenance of 400, 220KV Substations and associated Transmission works. Maintenance of the installation including Protection is to be carried out for achieving the maximum availability of the installation as per the standard prudent utility practices.
- All instructions from SLDC are required to be complied with for safe and efficient operations.
- Intra-State metering of the licensees is carried out for recovery of the energy supplied as per the rates approved by the State Commission.

4. Construction Department:

- The function of the Construction Deptt. is to carry out the Augmentation Works & New Projects in the system.

5. Stores Department:

- Stores Deptt. is responsible for material management and disposal of scrap and obsolete material.

6. Commercial Department:

- Commercial Deptt. is responsible for preparation and filing of the Annual Revenue Requirement and other petitions before the Regulator. All commercial transactions, contracts, negotiations is the domain of the Commercial Deptt. The petition filed by various generating companies, transmission & power trading utilities before CERC are also dealt by Commercial Deptt. on behalf of DTL.

7. Planning Department:

- The Planning Deptt. is responsible for the development of Power System in a coordinated manner with DISCOMs to meet the growing power demand and to provide reliable & efficient power supply to the NCT of Delhi. The Planning Department is also responsible to provide Technical Support to other departments of DTL.

8. IT Department:

The IT Department is responsible for establishing, maintaining and updating the IT network of DTL as per the IT policy. The IT Department is also responsible for monitoring the performance of IT equipments procured and for providing repair and maintenance of the same. The IT department also provide latest information to all concerned by constantly updating the website of DTL as well as diverse departmental details of various departments. Besides this, the IT department is also responsible for providing the IT interface to the entire employee related affairs within DTL such as pay and allowances, leave records and various data base information system for employees to facilitate administration and finance departments.

NOTES:

Besides the foregoing, keeping in view the individual capabilities, exigencies and requirements of the organization, any additional responsibility can also be assigned to any of the functionaries of DTL in the best interest of the organization. Since DTL is consisting of all background officials i.e. Engineering, Finance, Administration, Legal etc for all day-to-day activities and special assignments various teams are also formed consisting of officials from any of the department or division in the best interest of organization and smooth functioning.