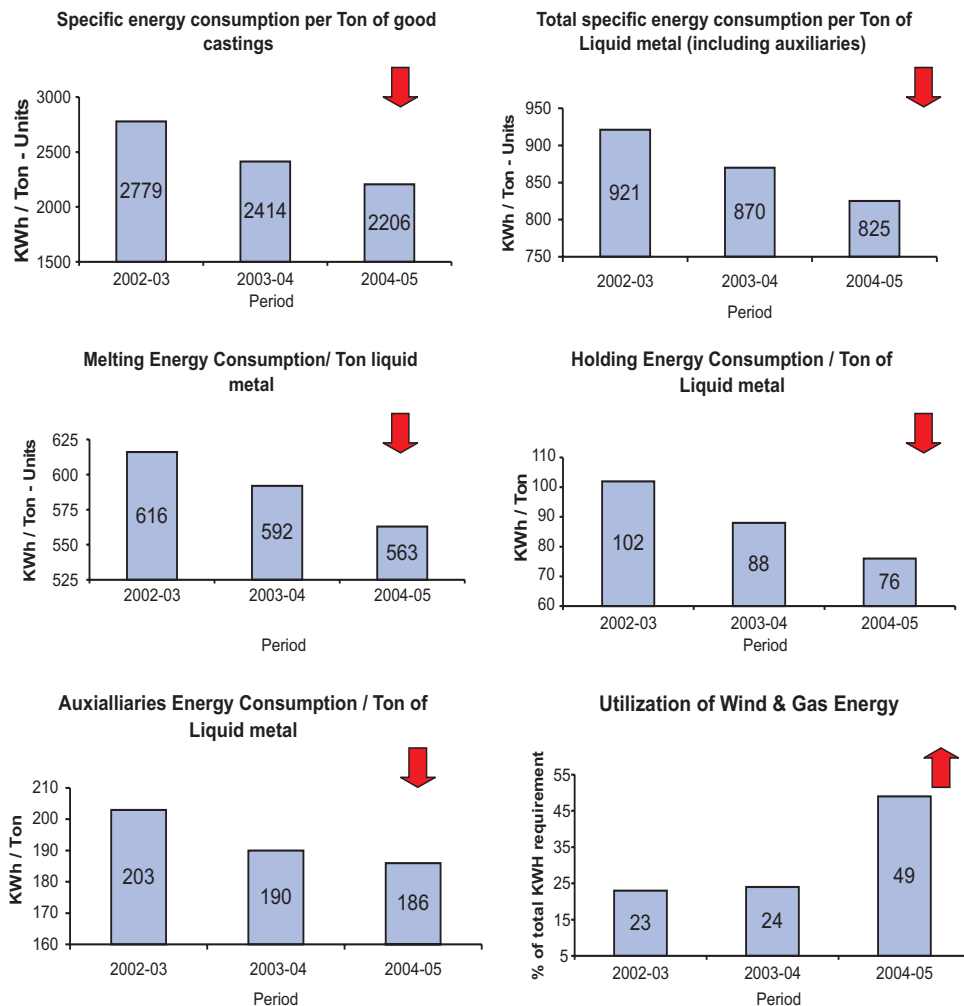


Energy Consumption

Energy Saving Measure	Unit	2002-2003	2003-2004	2004-2005
Annual production	MT	24913	33446	42441
Energy Cost as % of sales	%	24.06%	21.70	18.71
Specific energy consumption of the unit per ton of good castings	KWh/ton	2779	2414	2206
Specific energy consumption of the unit per ton of Liquid metal	KWh/ton	921	870	825
Cost saving obtained through the use of green energy from wind mills and gas energy.	Rs.in lakhs	54.57	71.08	75.67

Graphical representation of energy consumption



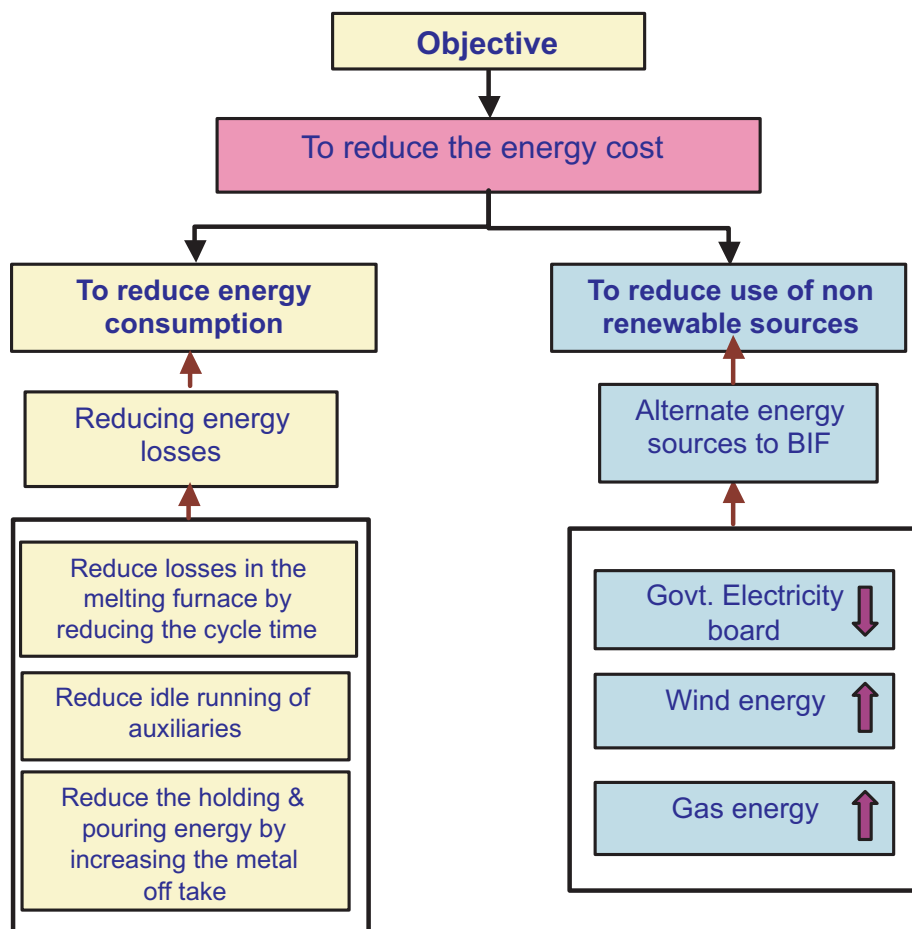
Energy Conservation Activities in BIF

Energy policy

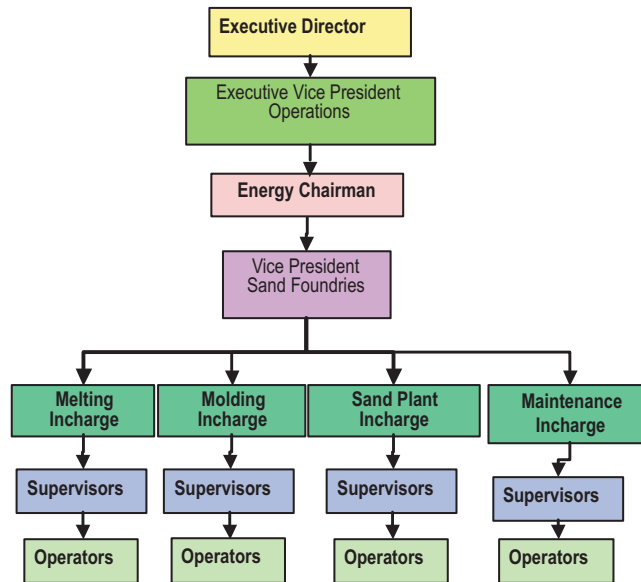
Brakes India Limited, Foundry Division, Sholinghur involved in the manufacture of Permanent mould grey iron castings and High pressure moulded grey iron and ductile iron castings is committed to:

- Promoting Energy conservation measures by implementing various process improvements.
- Using Green energy to the maximum extent.
- Training & Active participation of all employees in adopting the best practices

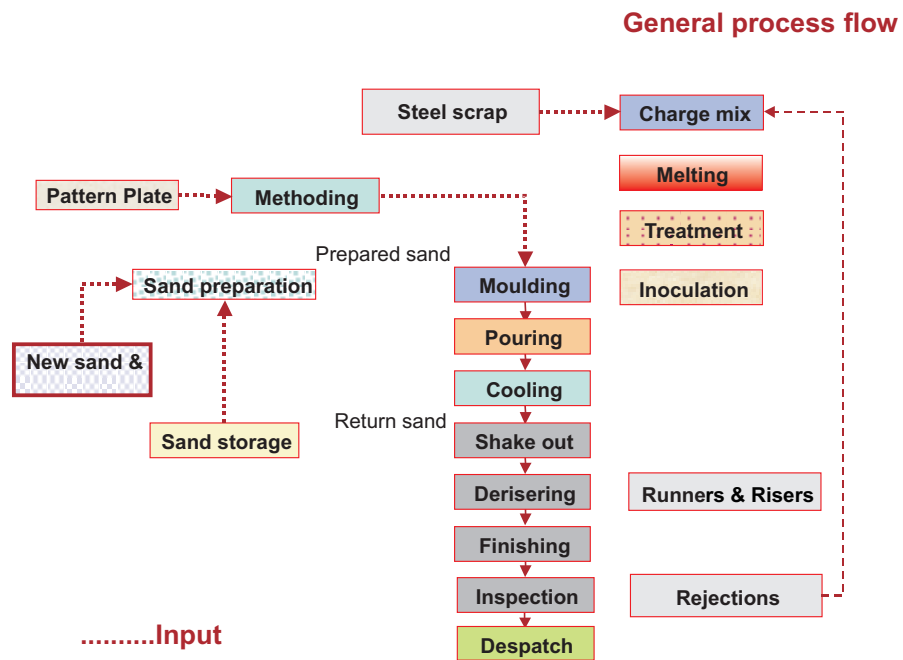
Outline of Energy Conservation



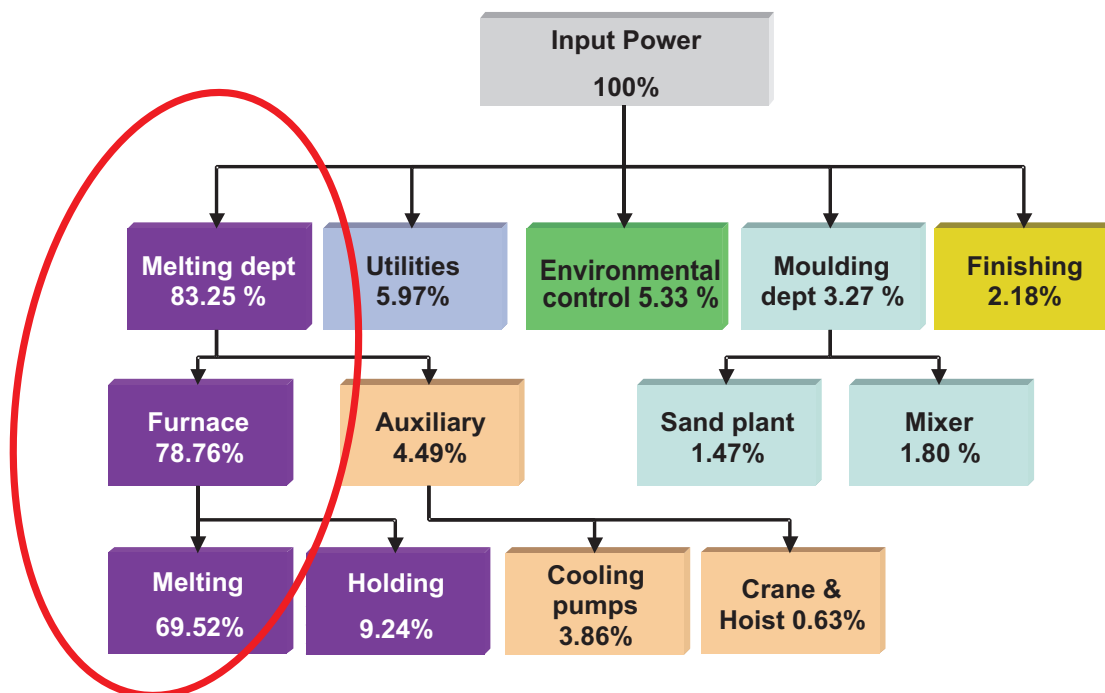
Energy conservation cell structure



Manufacturing process flow



Energy distribution Tree



Policy Deployment – Energy management

Brakes India Limited		Policy Deployment										Issue:01
Foundry Division		AMM	AMM	EM/PC	AMM	NCES	AMM	DM/LTL	DM/LTL	DM/LTL	AM/AMT	Year: 2004-2005
Responsibility												
Increase value addition		●	●	●	●							
Conservation of energy and non renewable resources		●	●	●	●	●	●	●	●	●	●	
Develop process to improve competitive advantage		●					●					●
Company Objective: Cost saving Target Rs 136 Millions	Guidelines											
	Policy Deployment Foundry Division Energy Management											
Activities		Introducing steel bundles of size 12x12x12 Increasing the oil RIP usage from 600 MT to 1000MT Treatment temperature less than 16000C To introduce another EOT crane for efficient charging To deplast grey rebar To increase ABB furnace coil diameter by 50mm Utilize wind energy to the extent of 14 Million kWh Utilize gas based energy to the extent of 30 Million kWh Conserve energy to the extent of 50000 kWh by installing VFD in the Compressor Circuit Improve the Power factor from 0.98 to unity in Class - 2 by introducing newly designed Harmonic filter										
Savings - 52.73 Million		Objectives										
12.54 Millions	Reduce the energy consumption per ton of metallica from 670 kWh to 620 kWh in SF 3	●	●	●	●	●	●					
10.77 Millions	To reduce the energy from 675 kWh/ tonne to 620 kWh/ tonne in SF 1&2	●	●	●	●	●	●					
29.42 Millions	Reduce energy cost by utilizing gas and wind energy							●	●			
	Reduce the auxiliaries energy consumption per ton of metallica									●	●	

Major activities implemented to reduce energy consumption

Charge materials and charging operations

Process	Activity	Best Practices for energy conservation	Action Taken
Melting	Condition of charge Metallics	Charges should not contain dirt and rust otherwise more specific energy required for melting	Kaizen 1,2
	Size of the charge materials	Small size of scraps to be used to yield the more melt rate otherwise melt rate will be low with more consumption	Kaizen 3
	Charging time	Higher charging time will increase energy consumption & radiation losse	Kaizen 4,5,6
	Furnace operating techniques	Higher furnace charging time will contribute 1% energy loss	Kaizen 7
	Composition control time	Base metal chemistry checking time will increase the idle run with molten metal. Chemistry lab should very nearer to the melt platform	Kaizen 8
Melting	Temperature control	When a metal reaches required tapping temperature, it should not wait for temp. check. This will increase the energy losses	Kaizen 9
	Slag removal practices	Slag formation is an inherent reaction of molten metal with oxides and dirt in charges More slag removal time will increase energy losses	Kaizen 11,12
	Melt schedules	Schedule for next day to be released a day before. Otherwise furnace will be in idle state	Kaizen 13
	Holding practices	Holder should always be in closed condition otherwise it will increase the radiation losses	Kaizen 14,15
Melting	Preheating the Furnace/ ladle	Furnace has to be started after preheating or to be filled with charges to absorb the residual heat in the furnaces otherwise cold starting will require more energy than normal melting.	Kaizen 17
	Increasing the bulk density of charge inside the furnace	Less charge density will increase the power consumption significantly	Kaizen 18
	Interlocking auxiliaries	Interlocking of auxiliaries with main equipment will eliminate the idle running hours	Kaizen 19,20,21
	Modifying the equipment design	Equipment modification will increase the output of the melting furnace	Kaizen 22
	Reduction of power tariff through alternate sourcing	Utilization of non renewable energy sources and alternate sourcing will reduce the power tariffs	Kaizen 23
	Improving the power factor	Lower PF will increase the current and voltage drop across the transformer & throughout the distribution systemKaizen 24	

After implementing the best practices, BIF achieved the following results

Activities	Time taken in Minutes	
	Earlier practice	New practice
Foundry returns charging	27	17
Steel Charging	15	9
Melting	20	15
Super Heating	10	10
Deslagging	5	4
Total	77	55

Results :

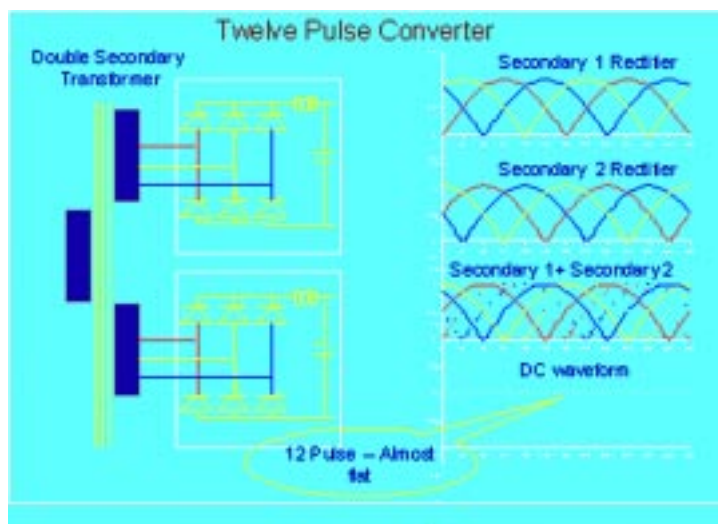
- Melt cycle time reduced from 77 to 55 minutes
- Melt rate increased from 3 MT to 4 MT per hour
- Melting Energy consumption reduced from 592 to 563 KWH/T.

Major energy conservation projects implemented during year 2004-05

BIF has implemented many energy saving proposals of small, medium and large scale.

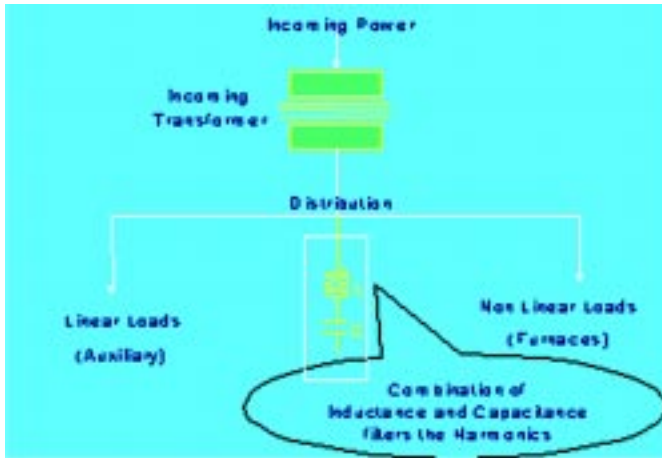
1) BIF has installed 12-pulse converter and harmonic filters in the induction furnaces to achieve unity power factor.

A. Installation of 12 pulse converter



After implementing 12 pulse converter, Power factor improved from 0.954 to 0.9886

B. Installation of harmonic filter



HARMONIC FILTER

Result
Power factor 0.9999

2). Reducing the melting energy consumption by increasing the bulk density of the steel scrap bundles

Technical analysis

The bulk density of steel bundle charge depends on the following 3 factors:

- Size of bundle
- Density of each bundle
- Shape of the bundles

Kaizen 1



Kaizen 2

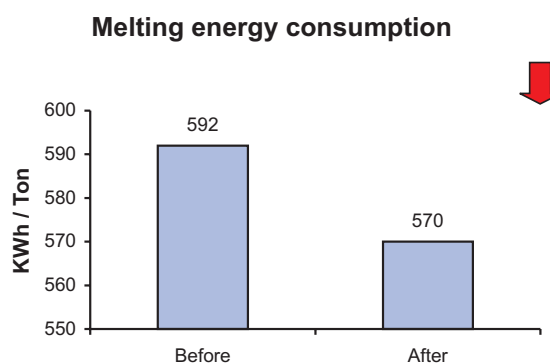
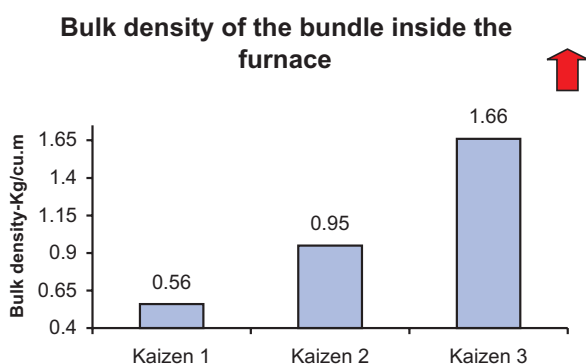


Kaizen 3

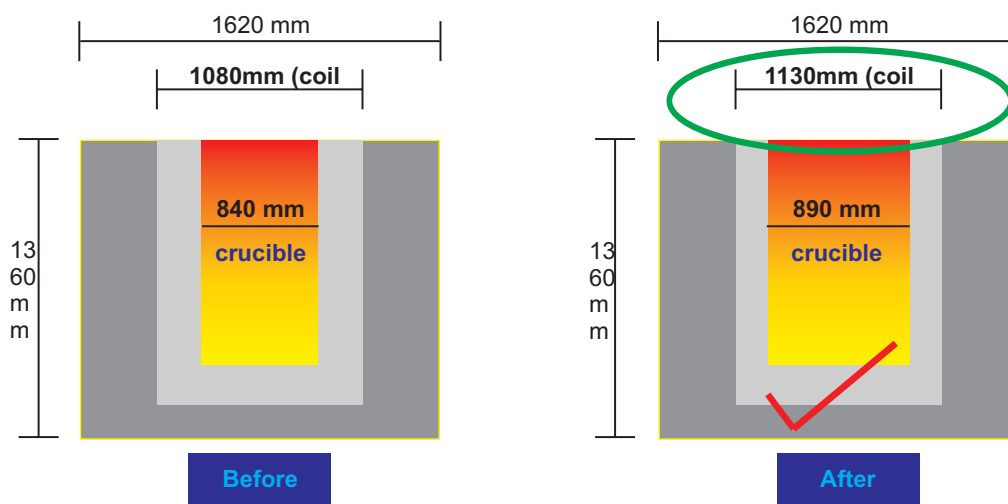


Kaizens	Bundle Size	Area of squeeze	Density of bundle	Bulk density in the furnace	Comparison of bulk density	Weight of charge in the furnace
Kaizen 1&2: To increase the bulk density of steel scrap bundle	20"x12"x12"	240 Sq.inch	0.95	0.56	1	630 Kg
	12"x12"x12"	144 Sq.inch	1.58	0.95	1.75 times	1080 Kg
Kaizen 3: To further increase the bulk density of steel scrap bundle by converting to hexagonal shape	12" diagonal Hexagonal	94 Sq.inch	2.45	1.66	3 times	1890 Kg

In order to get higher bulk density, the equipment design was changed to produce hexagonal bundles



3) Increasing the molten metal output with same energy input by modifying the crucible diameter



Result

Increasing furnace coil diameter by 50 mm leads to increase crucible capacity by approximately 15% (Melt rate increased from 4.1 to 4.7 MT per heat per furnace for the same energy input) This is horizontally deployed to remaining three melting furnaces.

Energy Conservation Plans and Targets

S No	Activity	Unit	Target- 2005-06	
			From	To
1	Reduction of specific energy consumption per ton of liquid metal	KWh/MT	825	792
2	Reduction of specific energy consumption per ton of good castings (Product)	KWh/MT	2206	2000
3	Increase the utilization of Gas Energy	%	37	41
4	Improve on the power factor	-	0.99	1

Environment and Safety

BIF received “**Green Foundry of the Year award**” in the year 2005

Safety

- o BIF’s EMS accredited to ISO 14001:2004 standards
- o BIF practices Occupational Health and Safety Management System.
- o BIF maps and analyze accident elimination, near miss accident and potential area for accidents continuously.
- o BIF maps and reduces the dust, heat & noise level and improves the illumination level inside the premises.
- o BIF regularly conducts periodical occupational health checkup for all employees.
- o BIF received "**CII Leadership and excellence award**" for **Safety, Health & Environment** in the year 2004